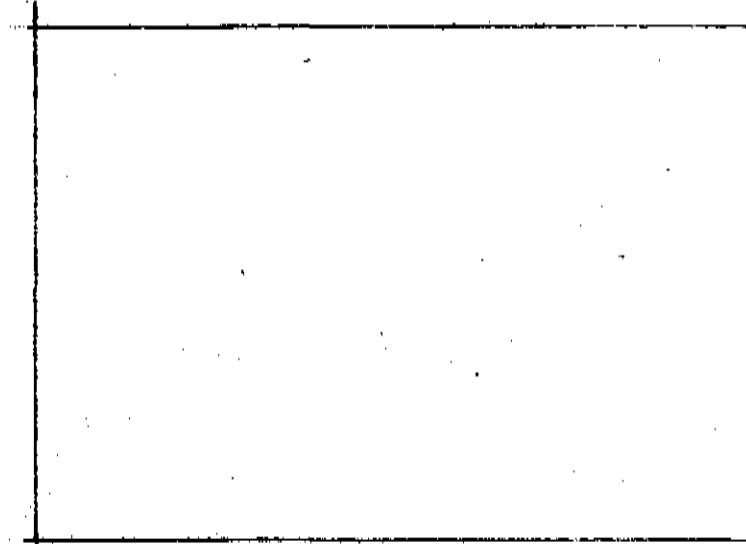
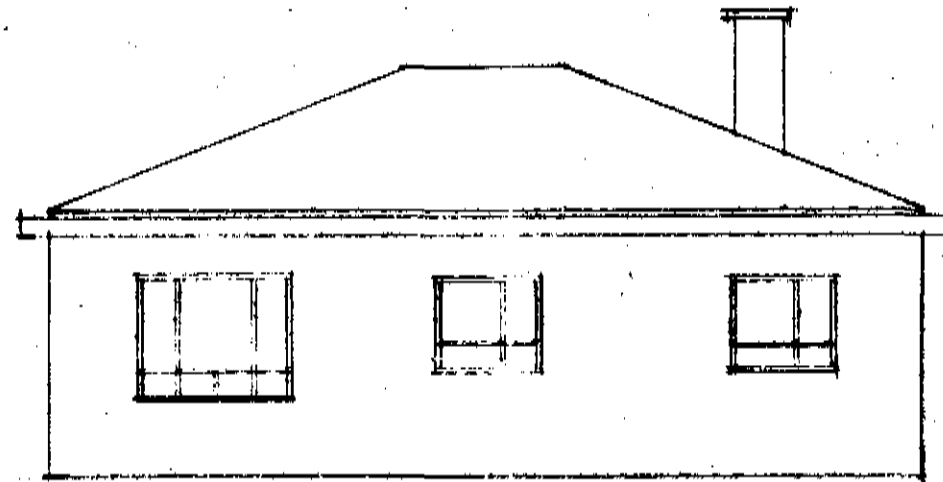
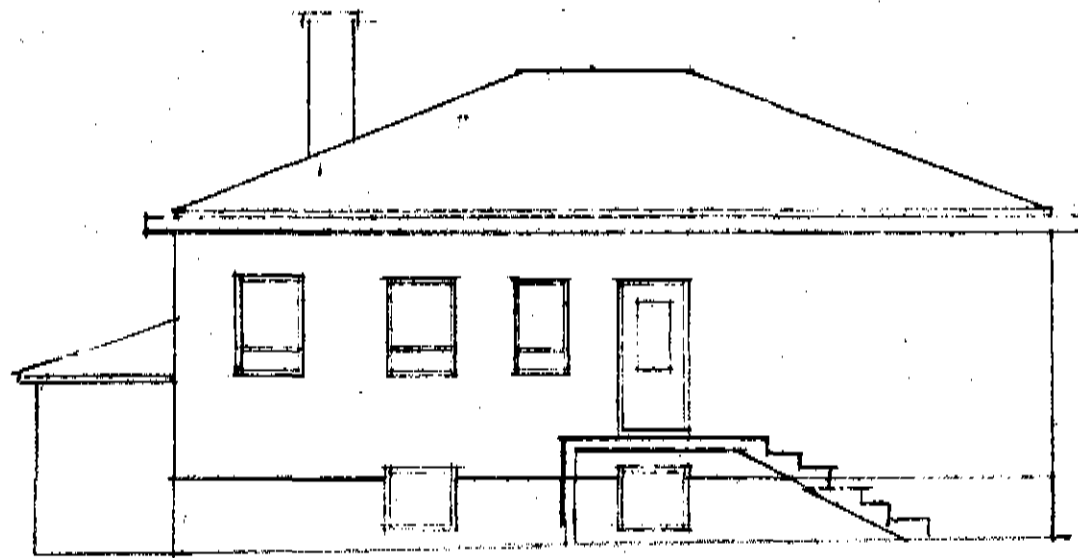
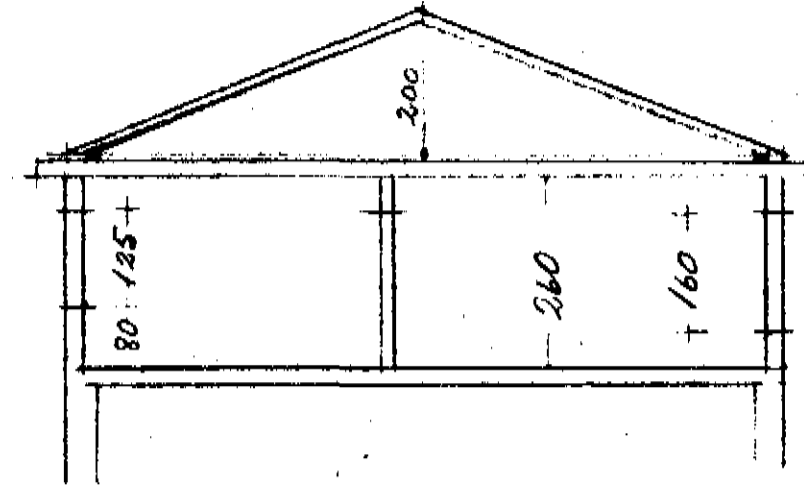
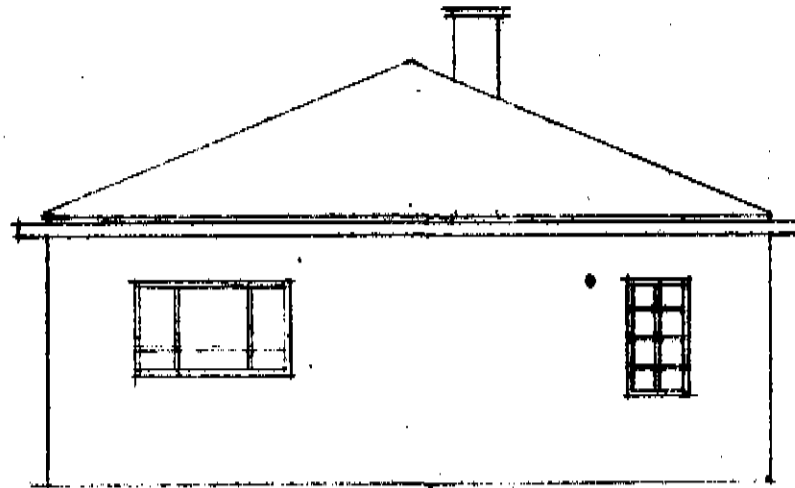
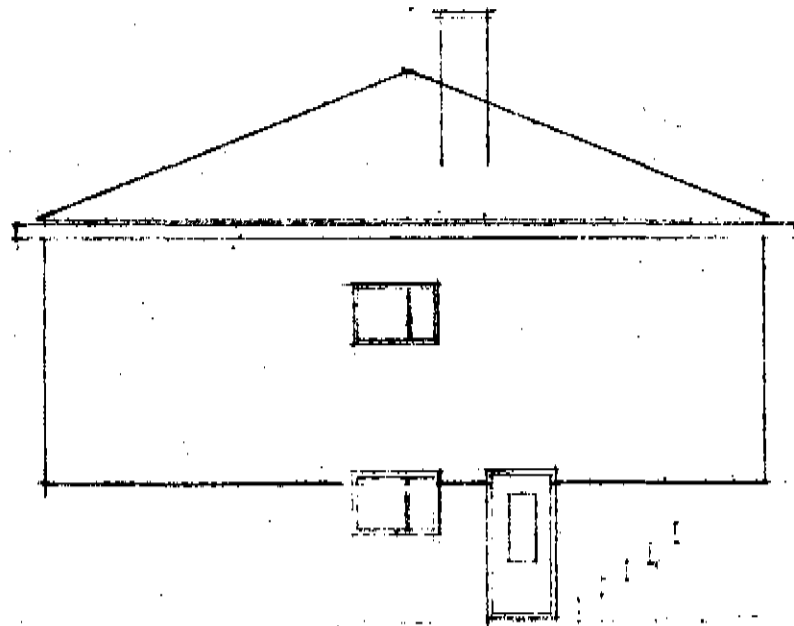


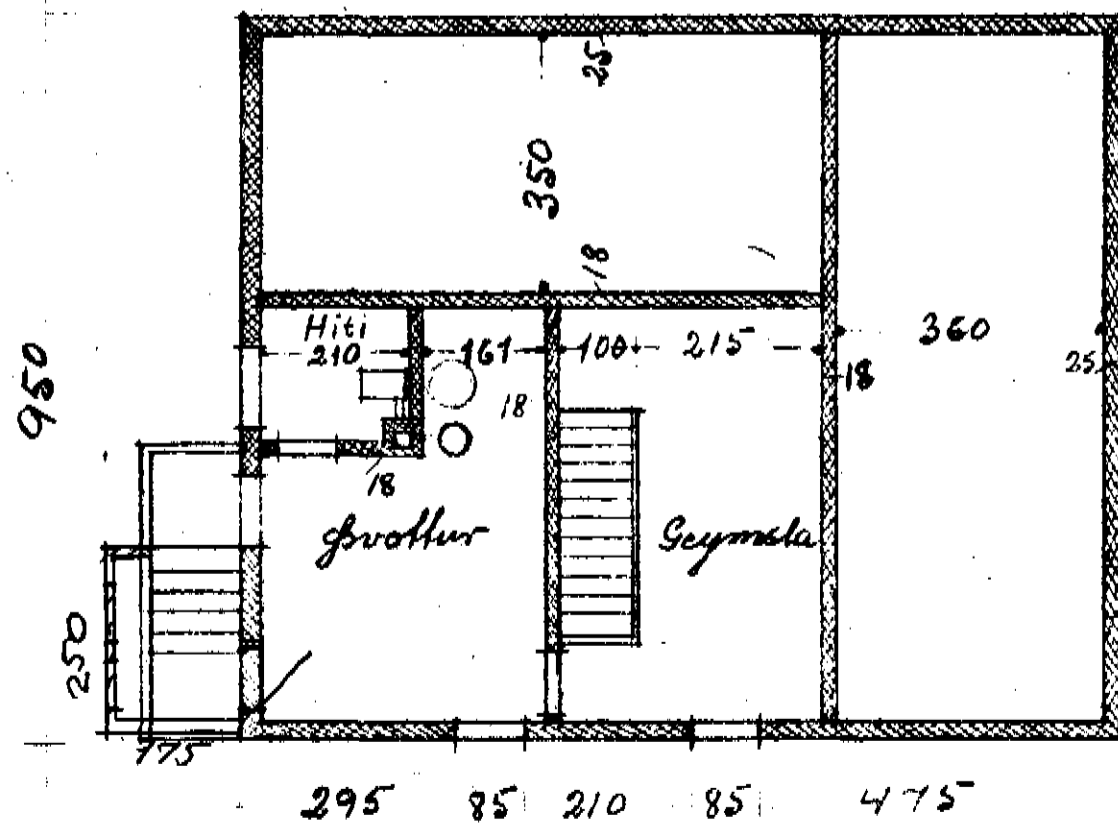
Kristinn Antonsson

Dalvík

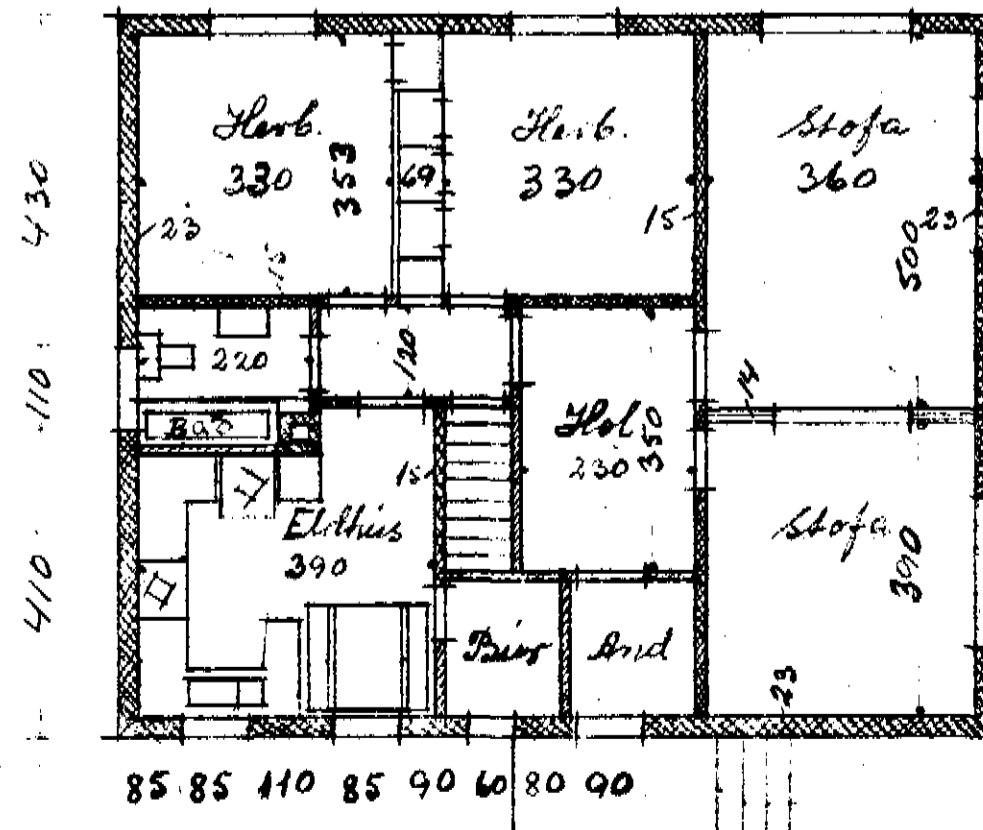
DÁRUGATA 9.



120 140 250 140 190 200 110



11,50
Kellari



Norður

stærð 109,25 m² mál 1:100

Gert í nóvember 1958

Skarphéðinn Jónhamsson

Bislóð	4,4 m ²	14,4 m ³
Kjallari	47,4 m ²	109,0 m ³
Heið	109,3 m ²	295,0 m ³
Þakr. (109,3 m ²)		79,0 m ³
		<u>497,0 m³</u>