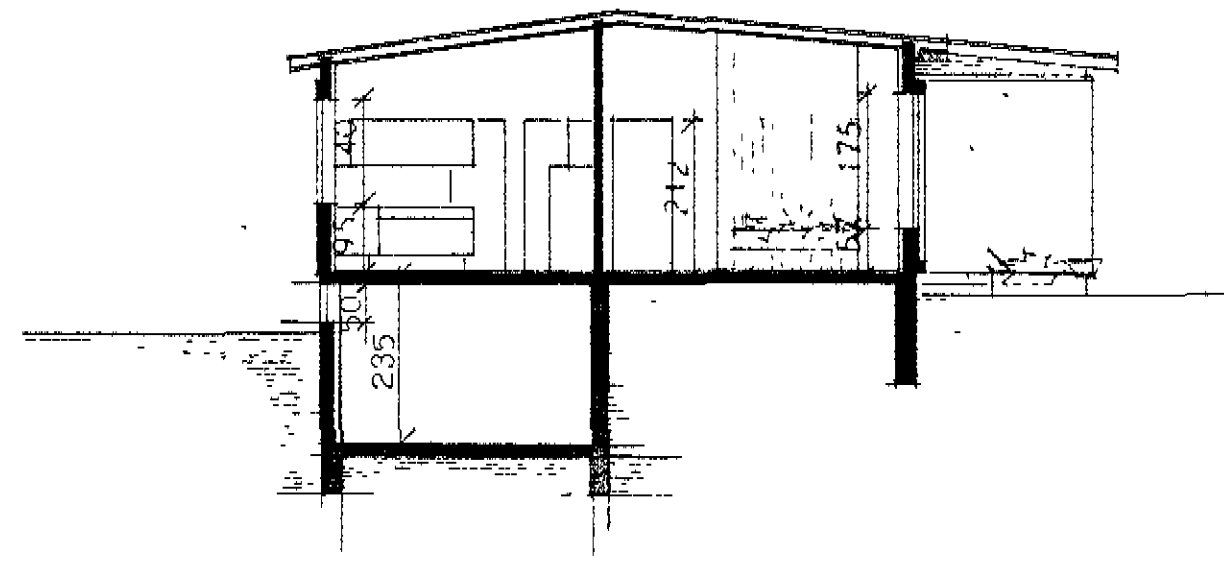
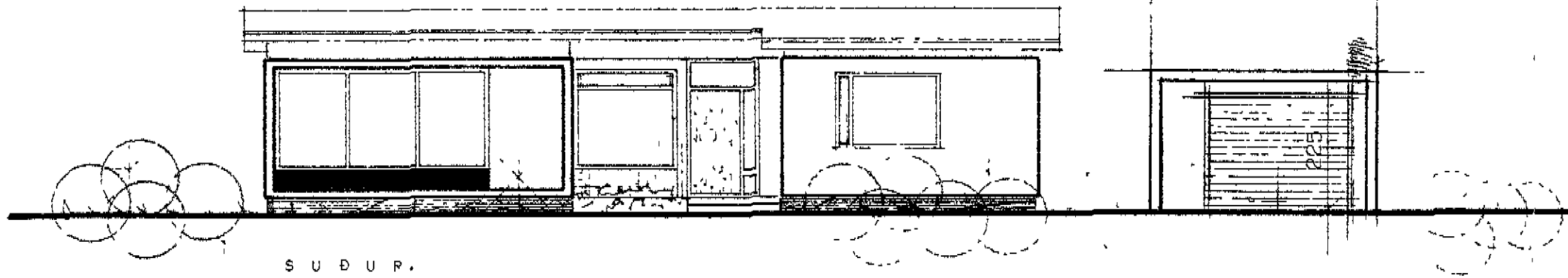
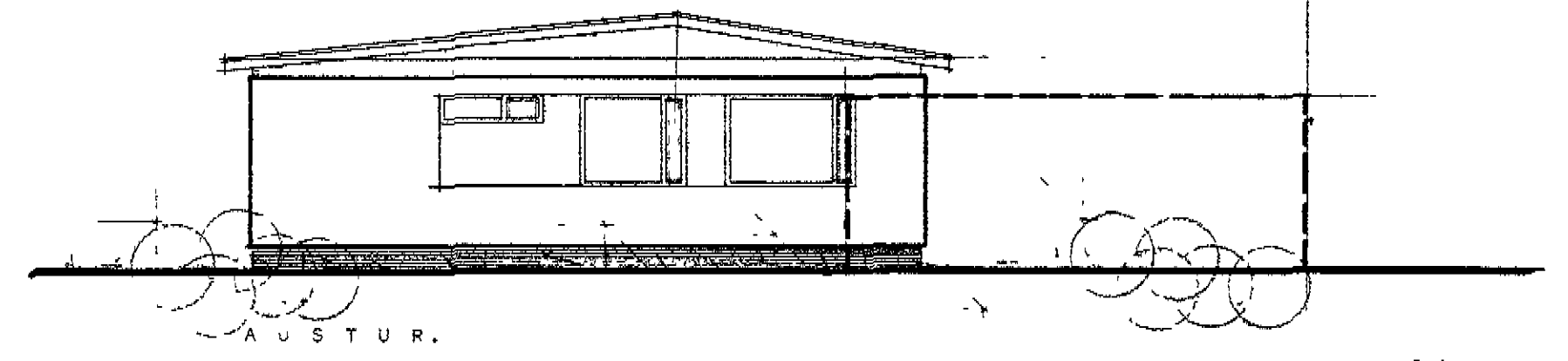
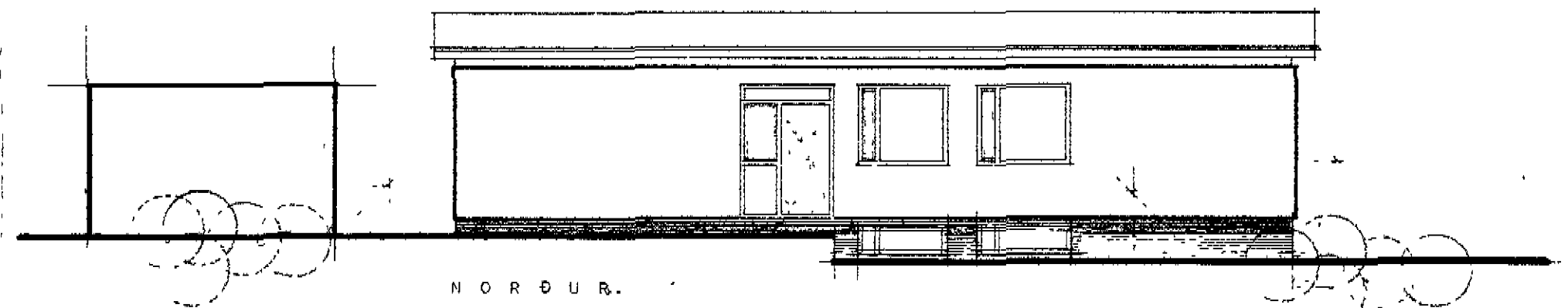
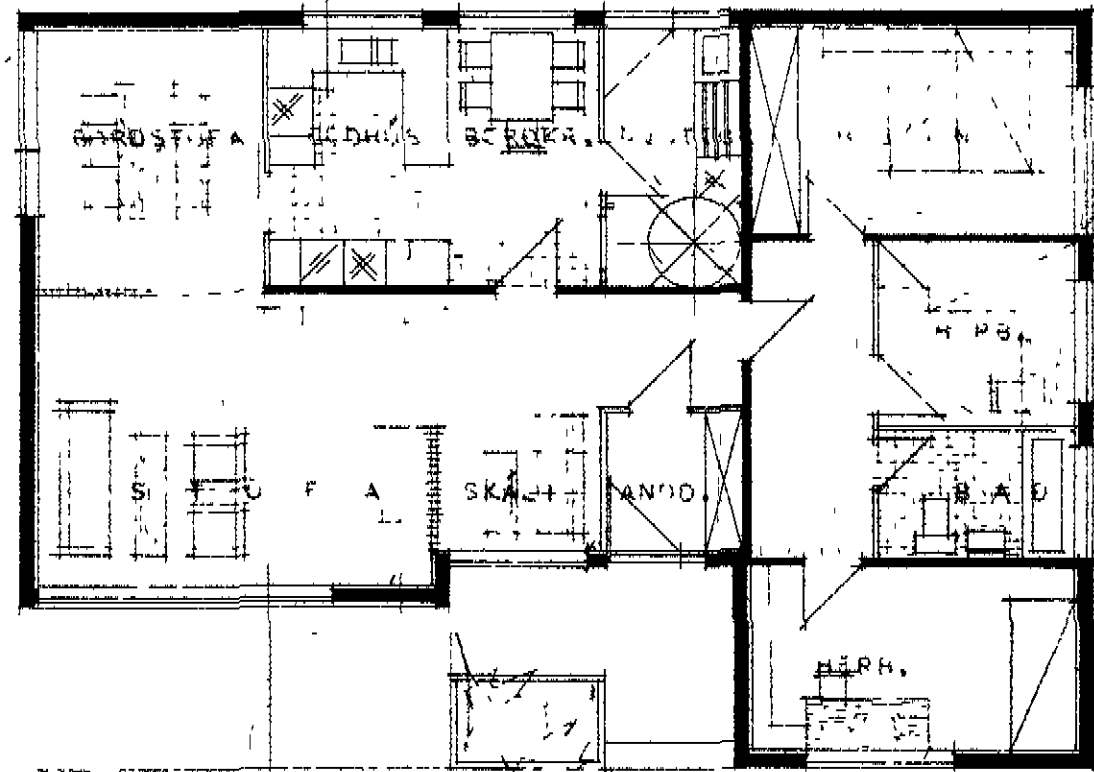
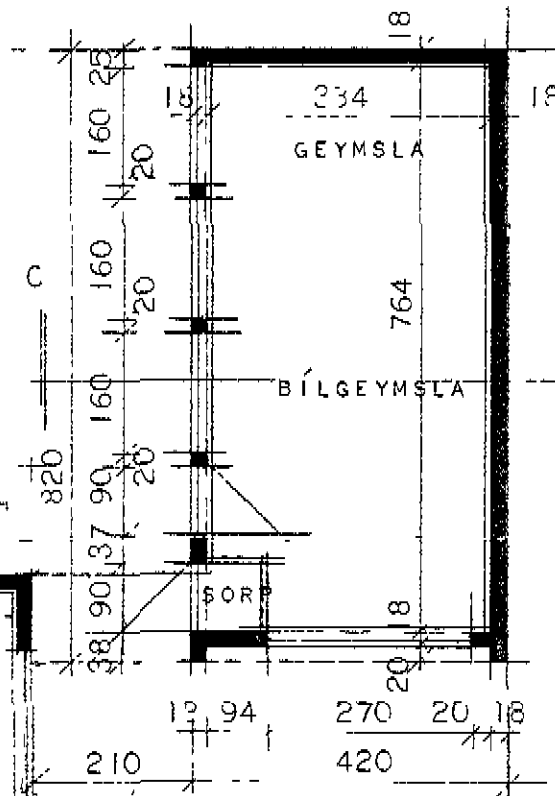
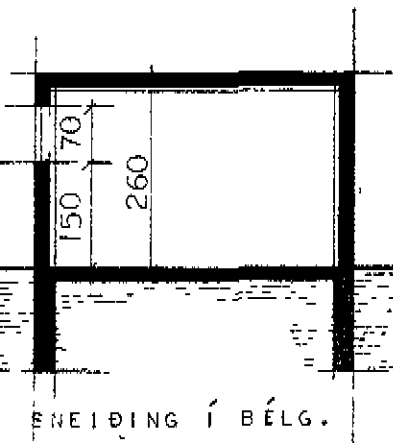


ÁSVEGUR 14. DALVÍK. Þórá Á. Skaphansdóttir

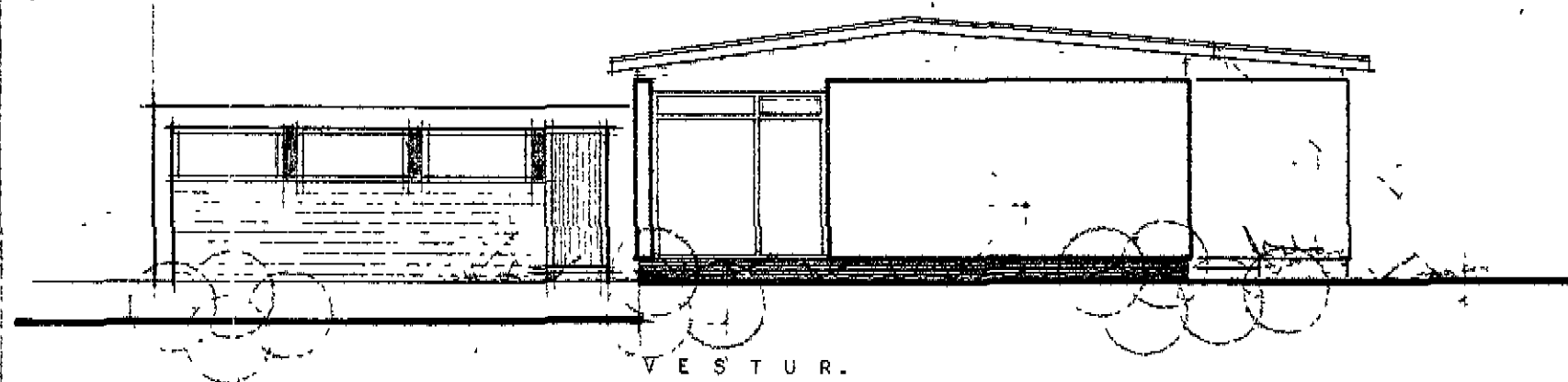
Sambærktá á fundi
byggingarnefndar
þ.



LATAHMÁL HÉSS BRÚTTÓ 120,94 m²
NETTÓ 106,41 m²



9,60
6,90



BREYTT Í MARZ 1972 SG	
HÚSNÆÐISMÁLASTOFNUN HÍKISINS	
DRÖNNYND, SNEIÐING OG ÚTLITSMYNDR MÁL 1:100	FINEYLSHÚS VERK 75 BLAÐ NR 1 JAN. 1966
6 Þórá Á. Skaphansdóttir Ráðgjafi	