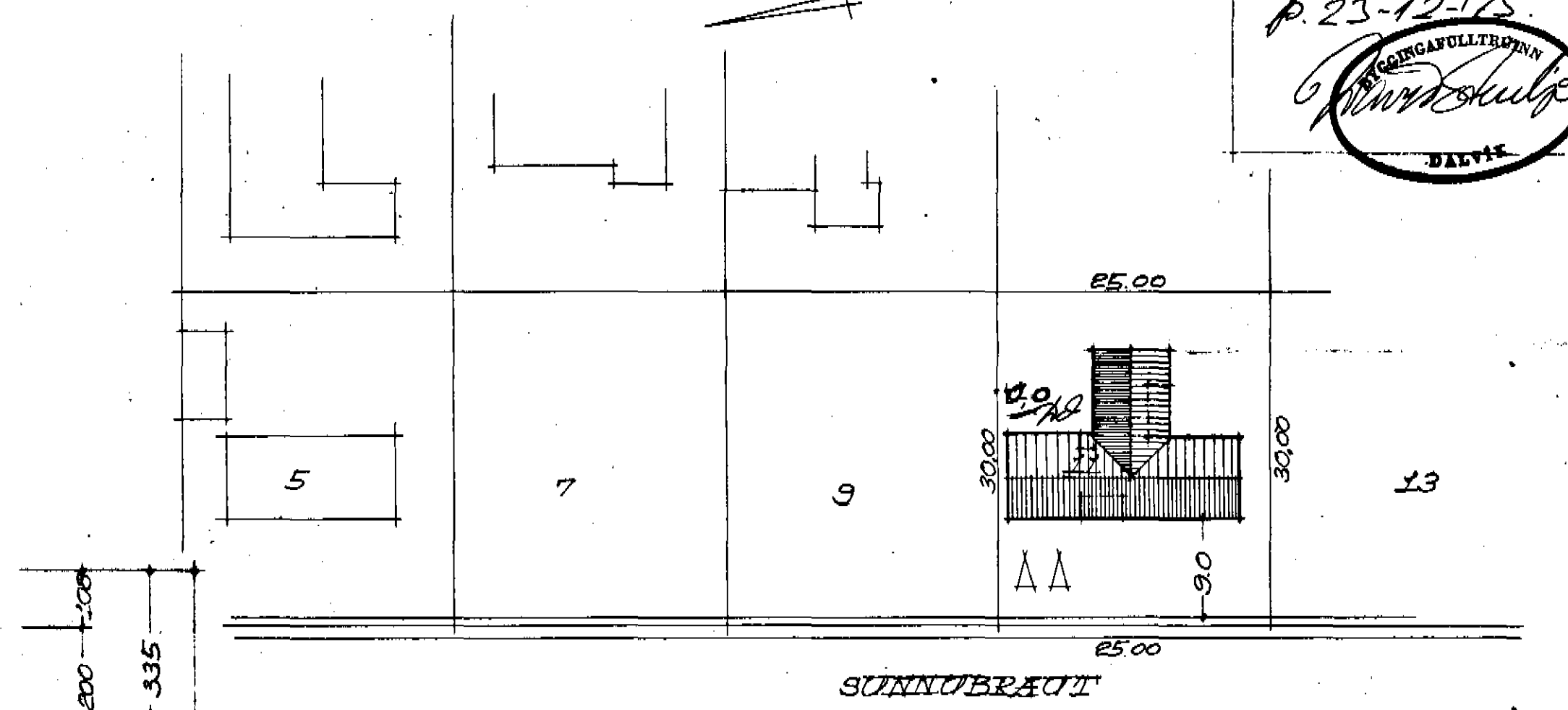
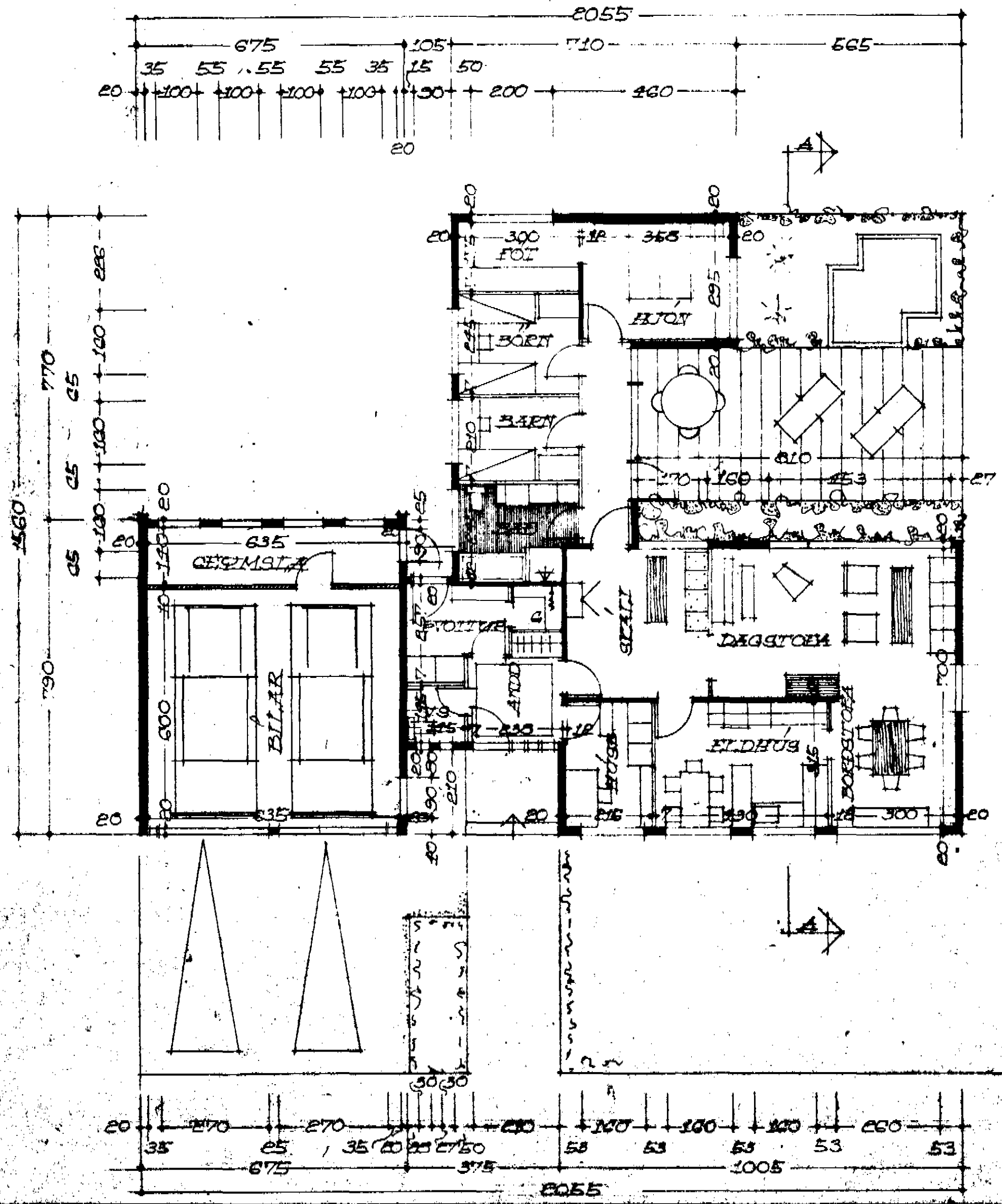
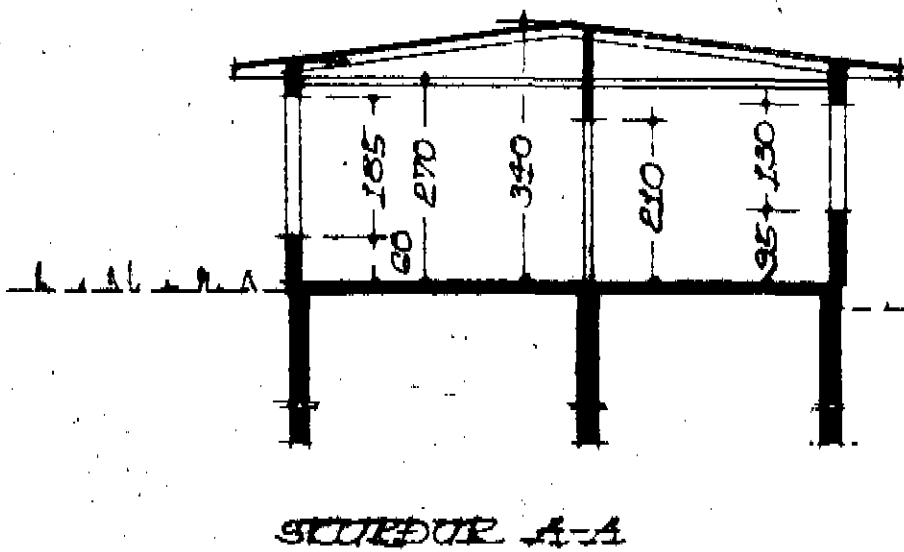


Sannaþótt á fundi
Byggingarnefndar
p. 23-12-175
BYGGINGAÞRÖUN
Sannaþótt
DALVIK



FLATARMÁL, HÚSS 133,7 M²
AFTÖÐUMÍNND M 1:500



DALBRAUT 7.

REYKJAVÍK Í OKT 1975
Þyrrarinn Þórnsson