

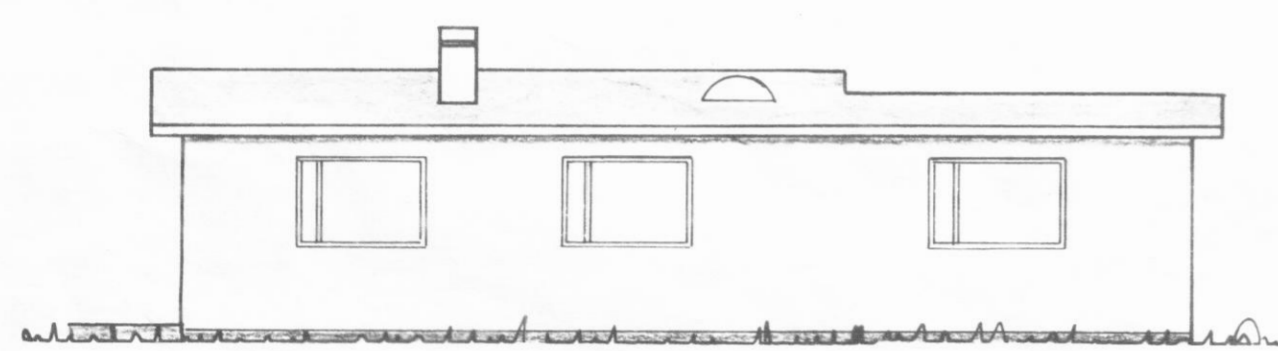
Samþ. á fundi í
Byggnæfnd þ. 13apríl
1976



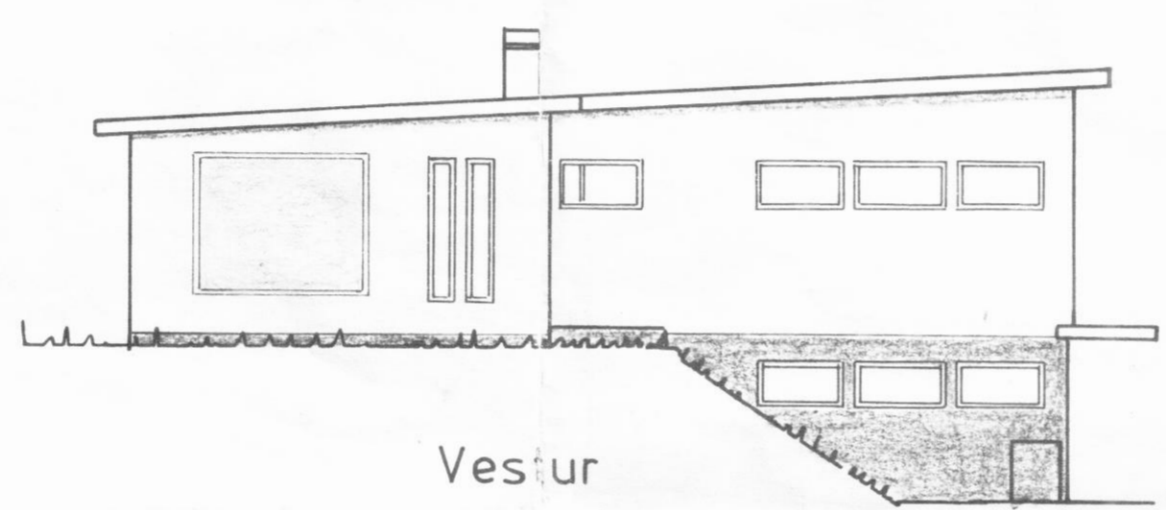
Suður



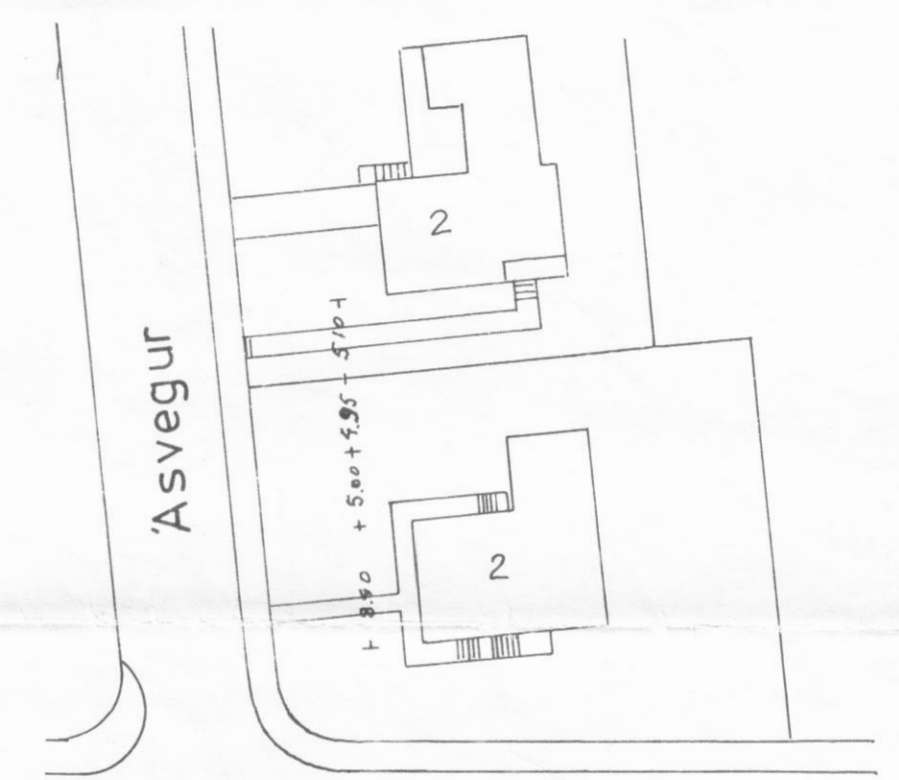
Austur



Nordur



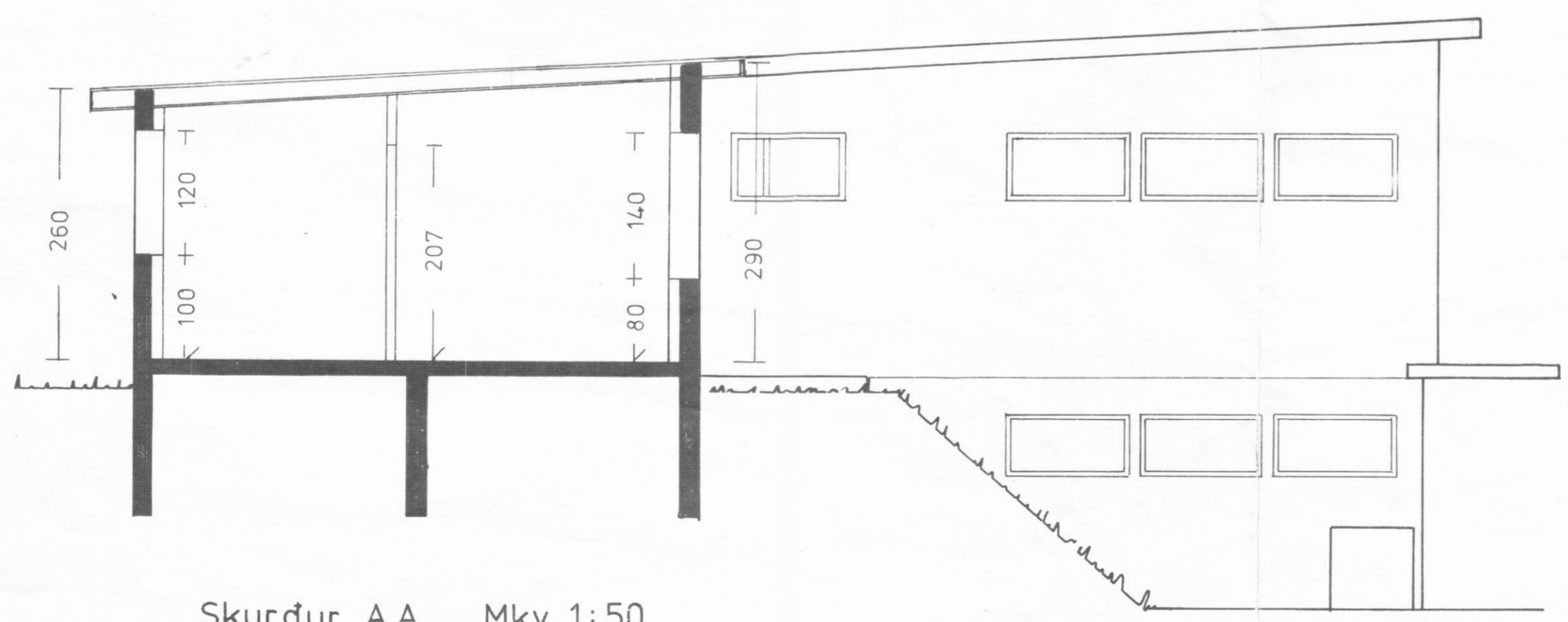
Vestur



Svarfaðarbraut

Afstöðumynd. Mkv. 1:500

27.5 m²
75.62 m³



Skurður A.A. Mkv. 1:50

Svarfaðarbraut 2 Dalvík.	Mkv. 1:500
Vidbygging.	1:100, 1:50
Útlit skurður og afstöðumynd.	Mars. '76
Oskar Pálmarsson	Blad. 2