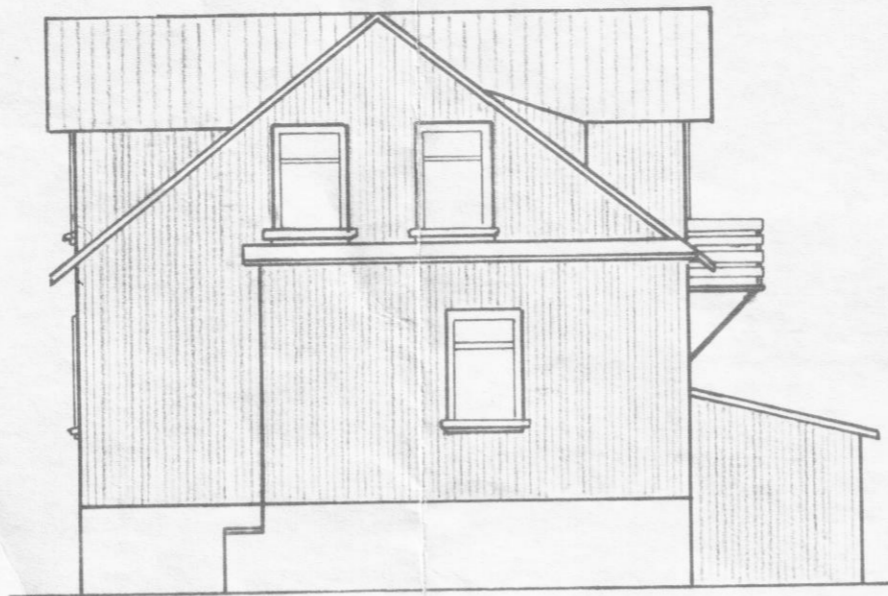
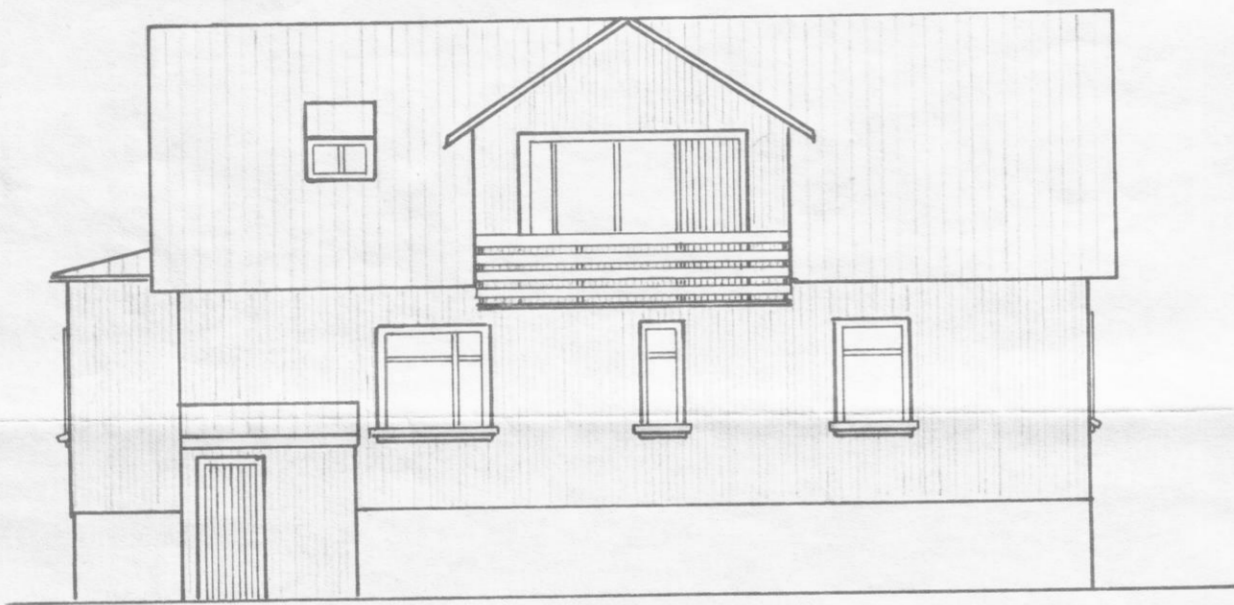


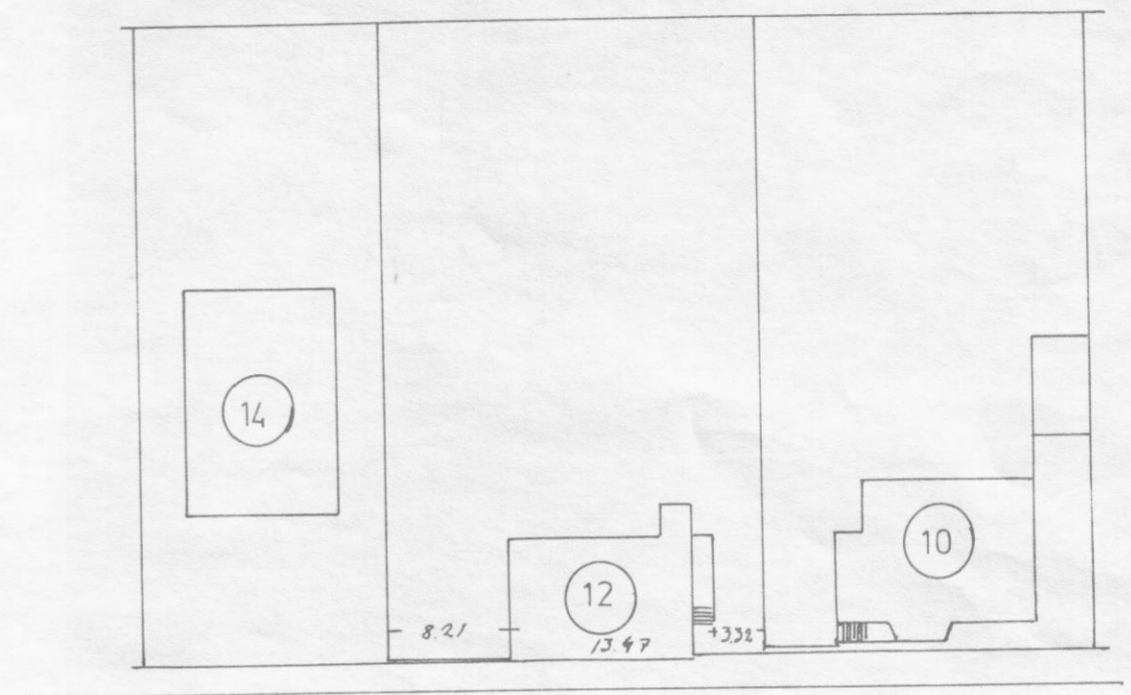
Austur



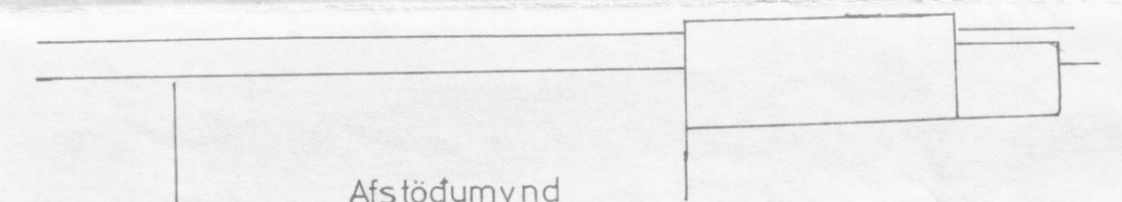
Norður



Vestur



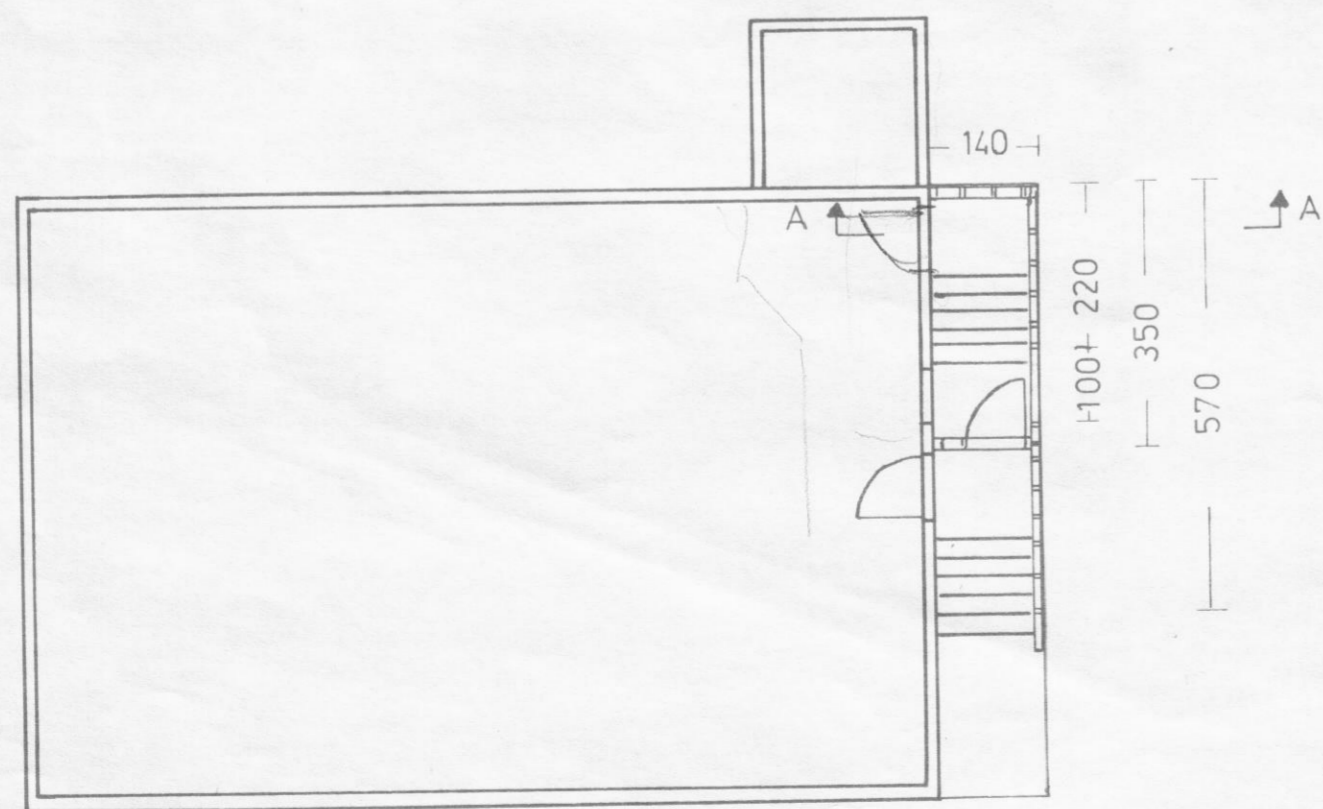
Hafnarbraut



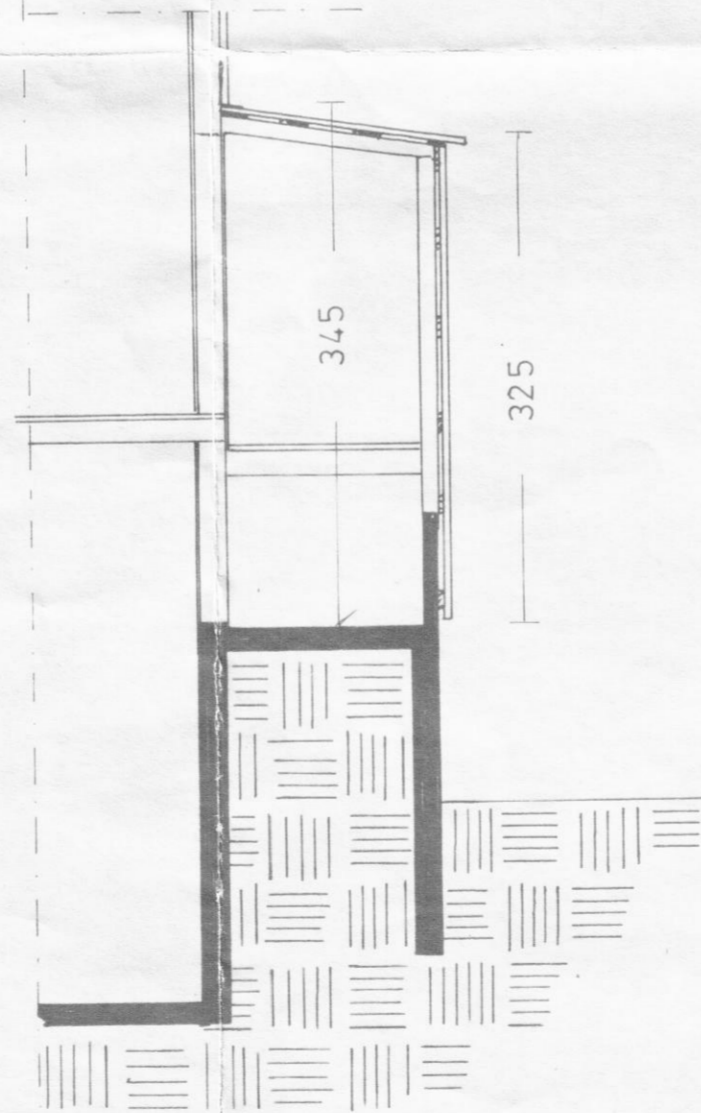
Afstöðumynd
Mk.v. 1:500

Flatarmál 4.9 m²

Rúmmál 16.4 m³



Grunnmynd



Skurður A-A
Mk.v. 1:50

Hafnarbraut 12 Dalvík.
Inngangur á efri hæð.
Grunnmynd, utlitsmynd skurður og
afstöðumynd. Mk.v. 1:100 1:50 1:500
Dalvík 2. marz '80 *Oskar Palmason*