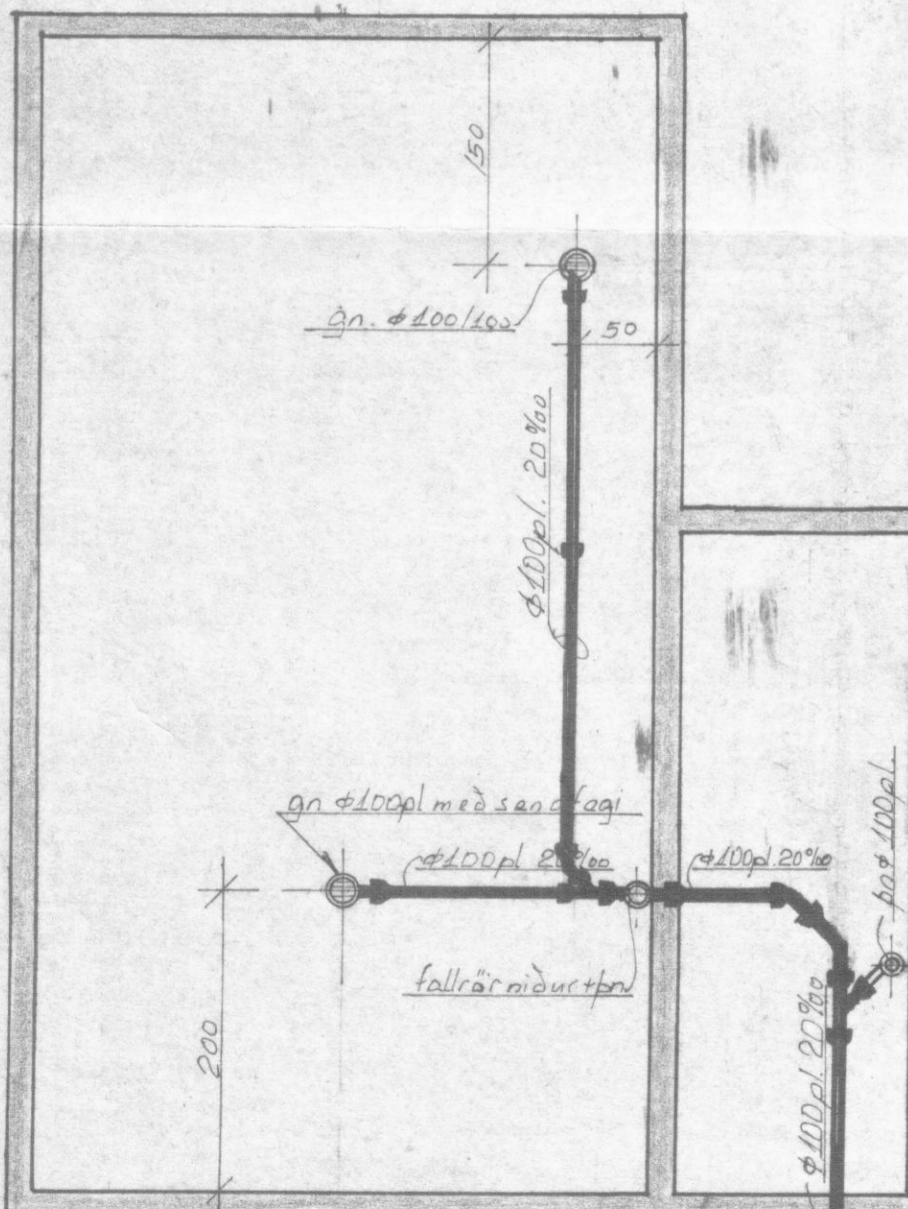
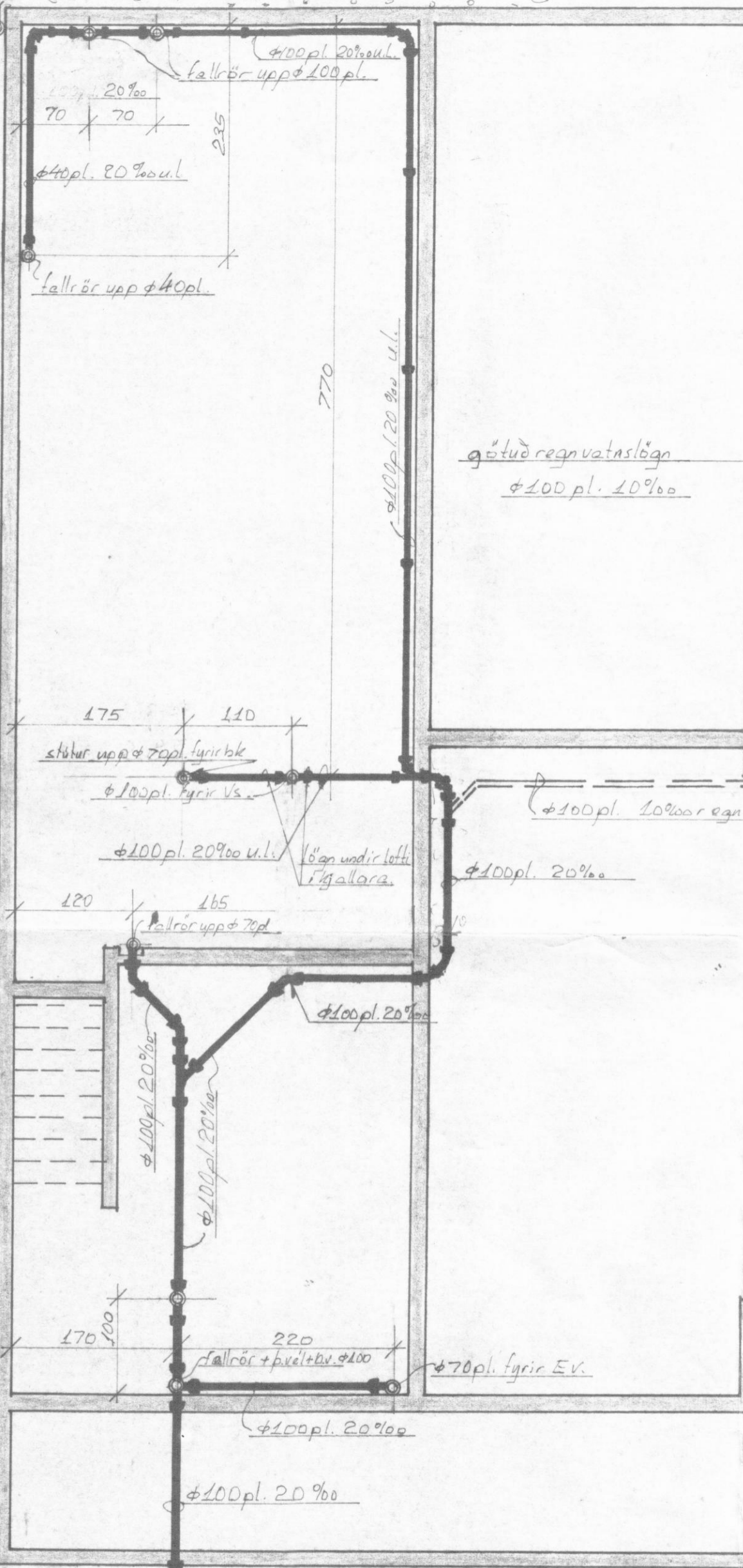


götuð regnvatnslögn  $\phi 100$  pl. 10‰ (k=14,95 af hægt er)

bn  $\phi 100$  pl.



regnvatnslögn  $\phi 100$  pl. 10‰

brunnur  $\phi 50$  cm (20" rör)

$\phi 150$  pl. 15‰ að Lögnum í götu.

Grunnmyn