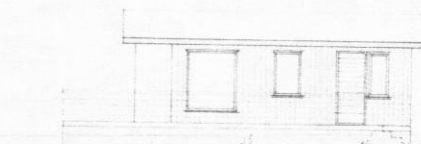
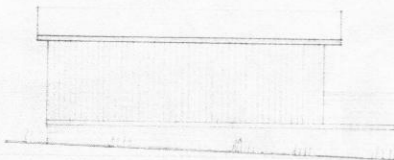


NORÐAUSTUR



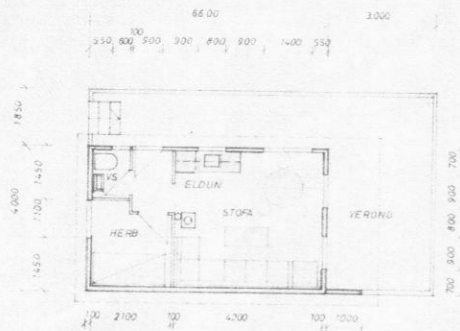
SÚÐAUSTUR



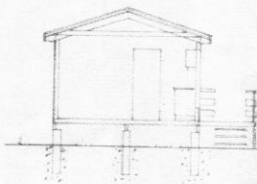
NORÐVESTUR



SÚÐVESTUR



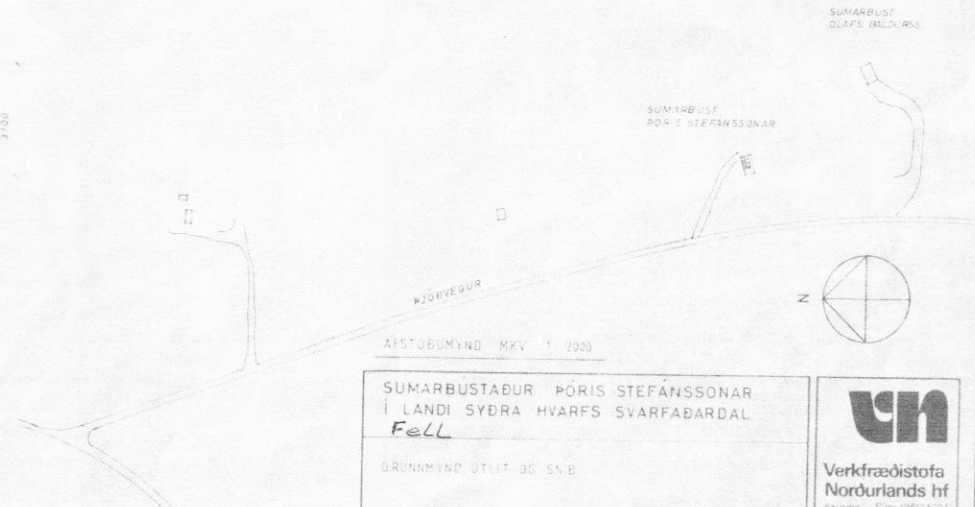
GRUNNMYND



SNID

STÆRÐIR
26,4 m² BRÚTTÓ
59,95 m³

Til skemmu
heiti Fell



AFSTÖÐUMYND MKV 1:2000
SUMARBUSTABUR PÓRIS STEFÁNSSONAR
Í LANDI SYÐRA HVARFS SVARFABARDAL
FELL
GRUNNMYND UTÍTT OG SNID



M	1:100	Hannad	Feknat	Sand	Dagur	N
	1:2000		S.P.		JUL 87	