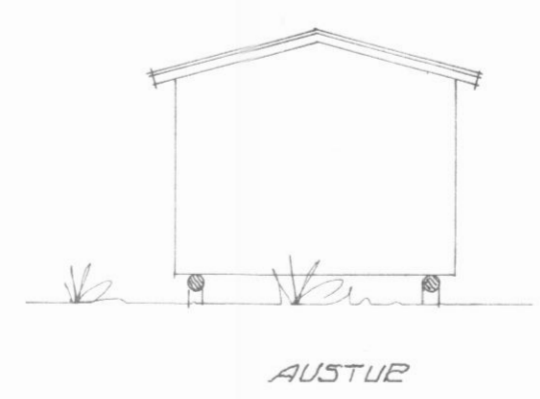
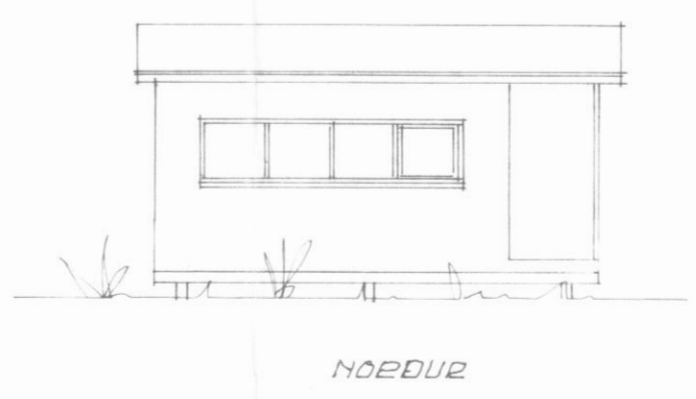
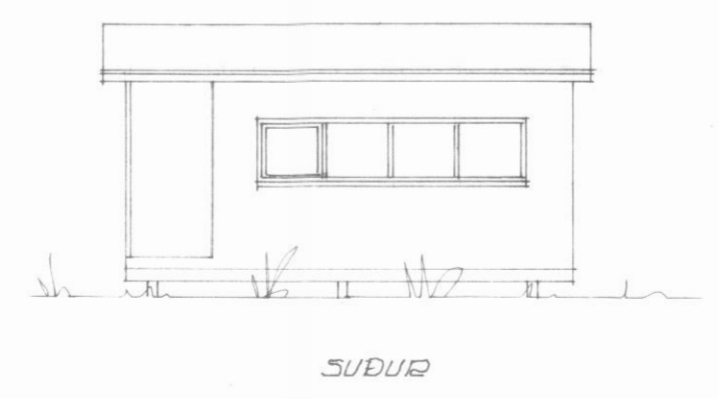
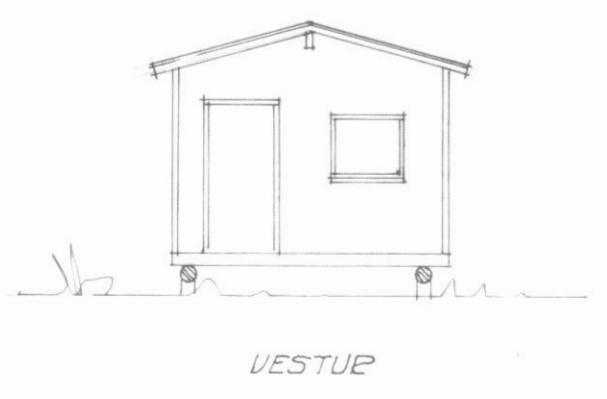
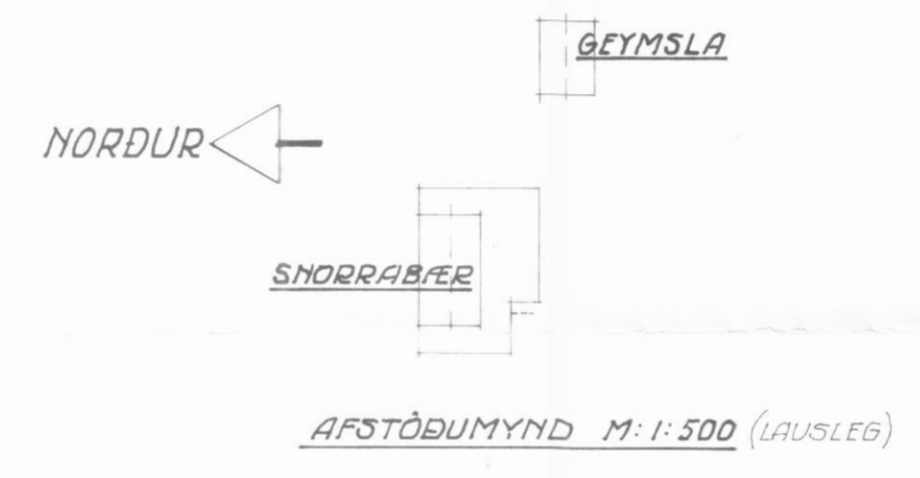
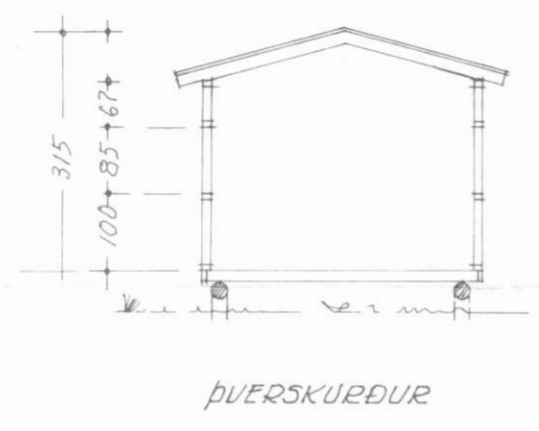
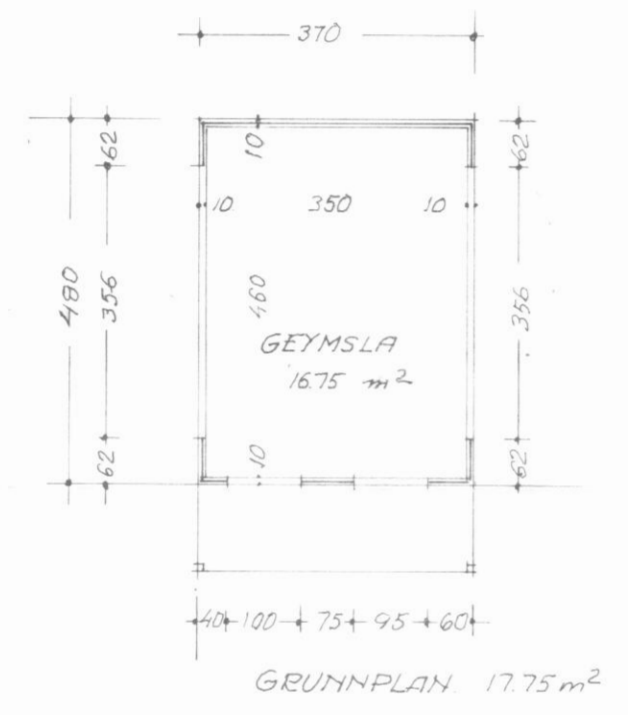
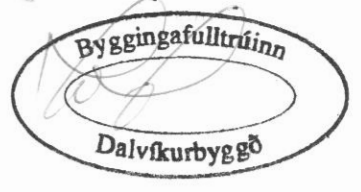


26.12.00



TEIKNAD EFTIR MÆLINGU, LÝSINGU OG LÖSAMYNDUM SIMONAR ELLERTSSONAR

LÝSING :
 HÚSIÐ HVIÐIR Á TVEIMUR RÚNNUDUM TRJAM. GÖLFBITAR ERU 50x125 % 60. STODIR 50x100. JPERRUR 50x125 % 60 Cm. HÚSGEINDIN ER FEST SAMAN MEB NEGLINGU, GATAGIRÐI OG BMF JÆNUM. GRINDIN ER KLÆDD UTAN MEB 12^m/m WBP KRÖSSVIÐI + 22^m/m LEKTUM OG RASUDUM KRÖSSVIÐI INNSTA KLÆÐNING 15^m/m PANELL EINANBRUN, GÖLFI, ÞAKI OG VEGGJUM 100^m STEINULL. ÞAK ER KLÆTT 25x150^m BORBVIÐI, PAPP A OG ÞAKJÆRMI.
 STÆRD: 17.75m² 53.00m³

ÚTVEGGIR E1-60

SNORRABÆR Í LANDI YTRA-HVARFS. GEYMSLUSKÚP	
GRUNNPLAN, ÚTLIT, SKURÐUR OG AFSTÖÐUMYND.	
AKUREYRI 01.08. 2000	160727-2769