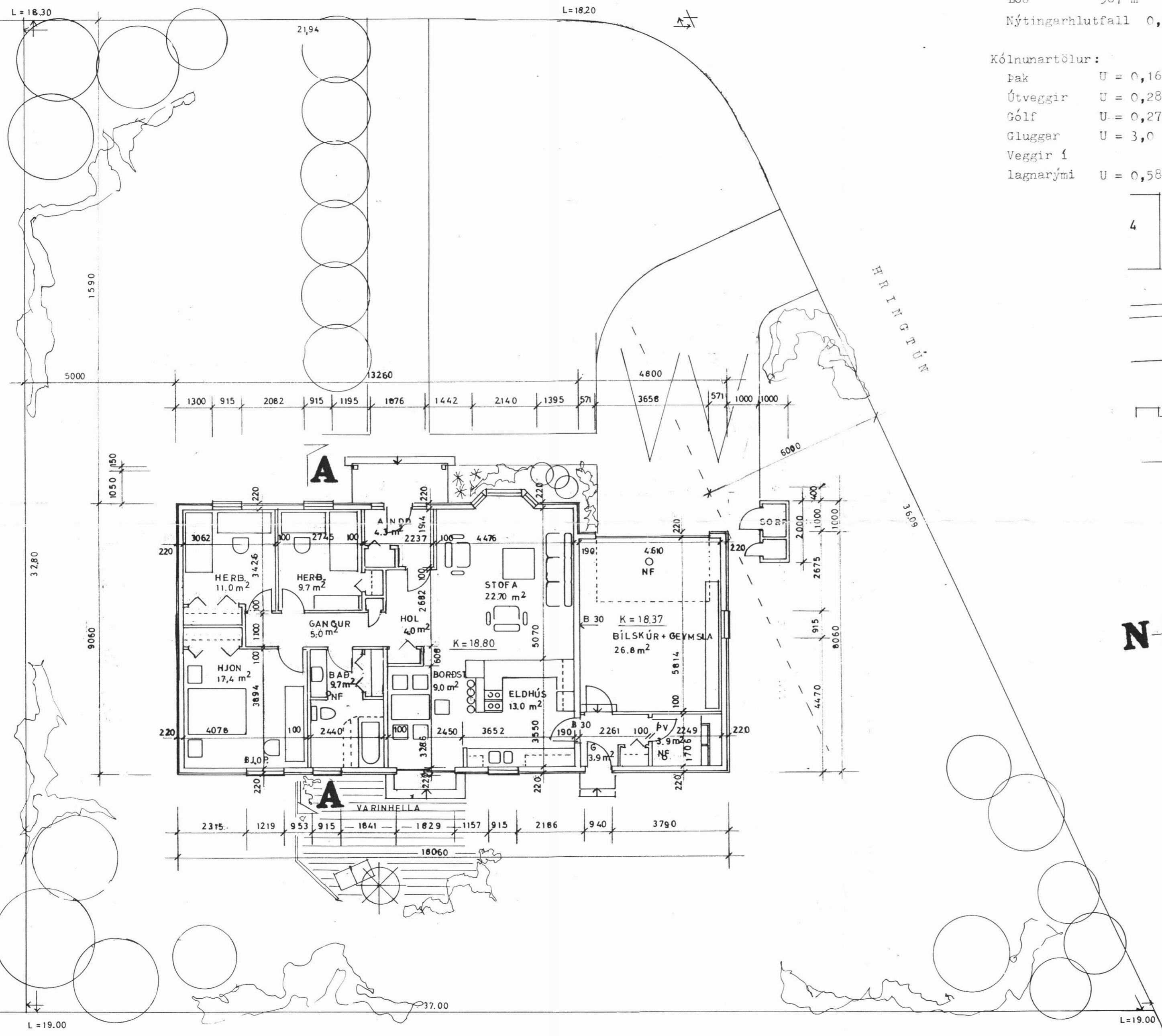


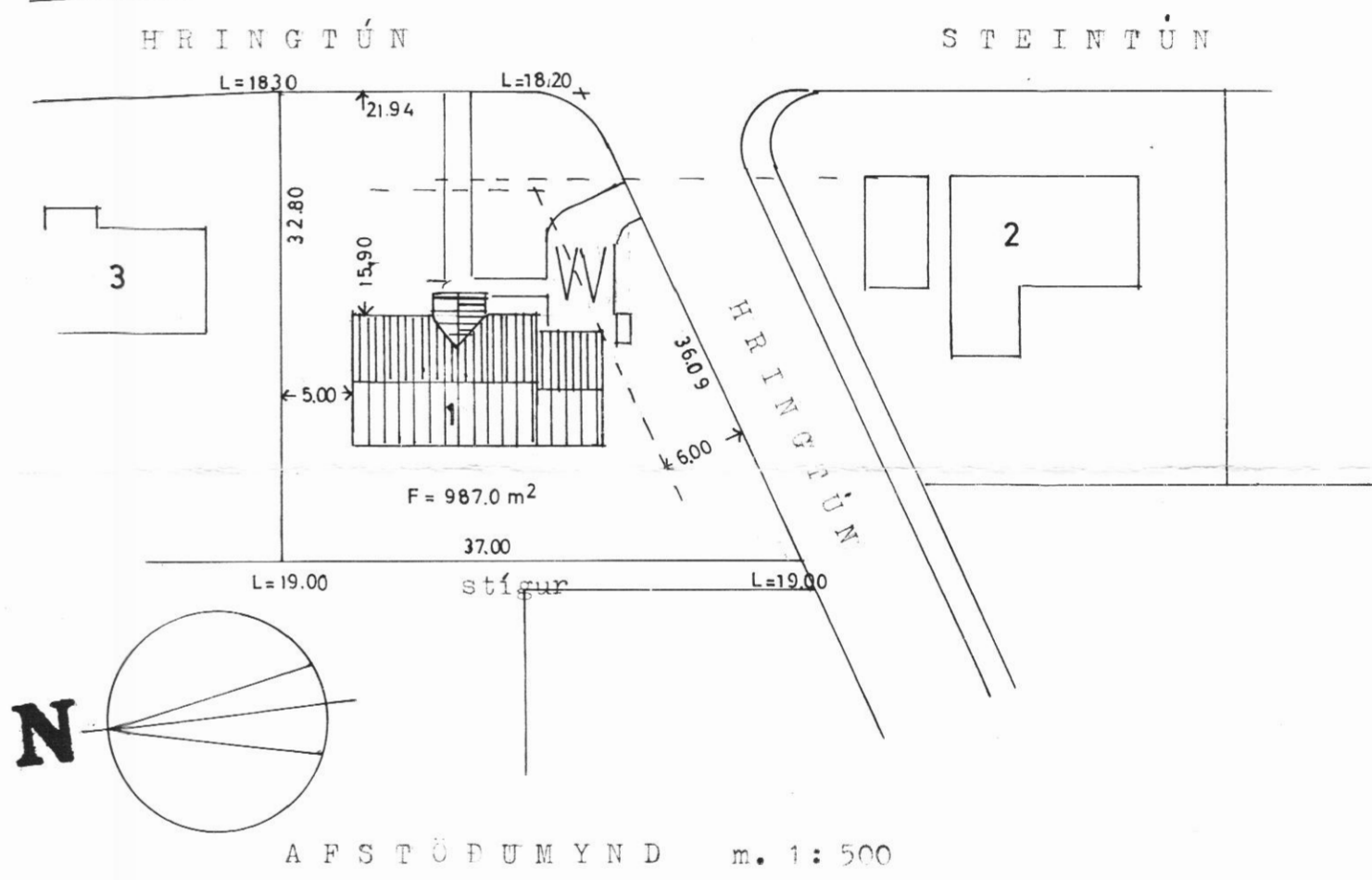
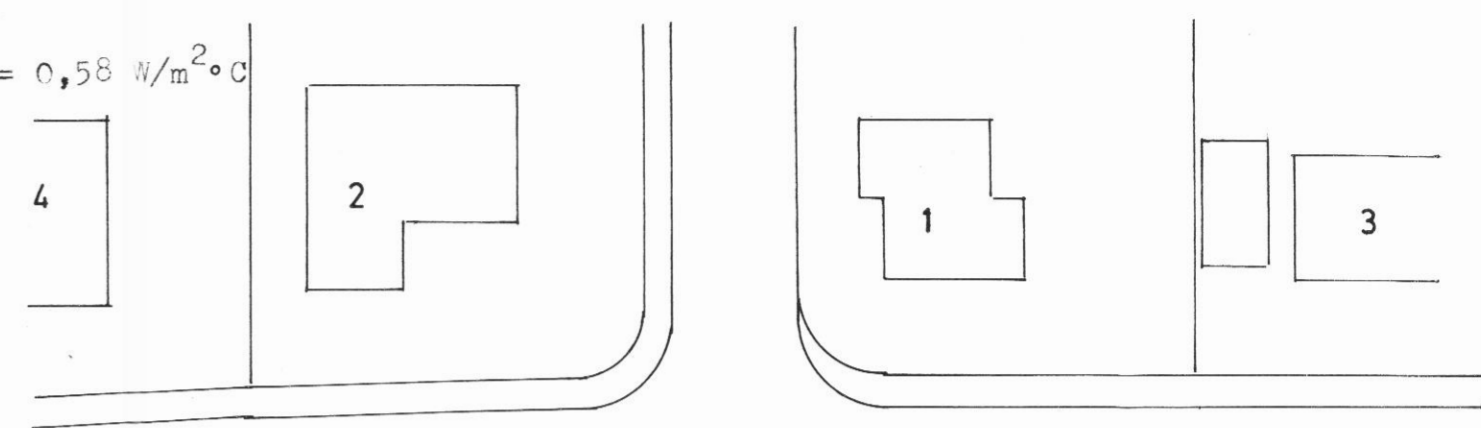
HRINGTÚN



Stærðir:	m <sup>2</sup> nettó	m <sup>2</sup> bruttó	m <sup>3</sup> bruttó
Jarðhæð	119,0 m <sup>2</sup>	128,5 m <sup>2</sup>	553,5 m <sup>3</sup>
Bilskúr	26,8 "	29,5 "	135,5 "
Alls	145,8 m <sup>2</sup>	158,0 m <sup>2</sup>	689,0 m <sup>3</sup>
Lóð	987 m <sup>2</sup>		
Nýtingarhlutfall	0,16		

Kólnunartölur:

Fak	U = 0,16 W/m <sup>2</sup> °C
Útveggir	U = 0,28 W/m <sup>2</sup> °C
Gólf	U = 0,27 W/m <sup>2</sup> °C
Gluggar	U = 3,0 W/m <sup>2</sup> °C
Veggir í lagnarými	U = 0,58 W/m <sup>2</sup> °C



MÓTTEKID  
30.11.93 A. G.

grunnmynd

**FERMCO**  
**1350**

Hringtún 1,  
Dalvík.

**1**

Hús frá FERMCO / grunnmynd  
afstöðumynd

m. 1: 100  
m. 1: 500.

Teiknistofa Hauks Viktorssonar,  
Þórsgötu 24, 101 Reykjavík. s. 623027, fax 11586  
Rvík. okt. '93

*Hauks Viktorsson*